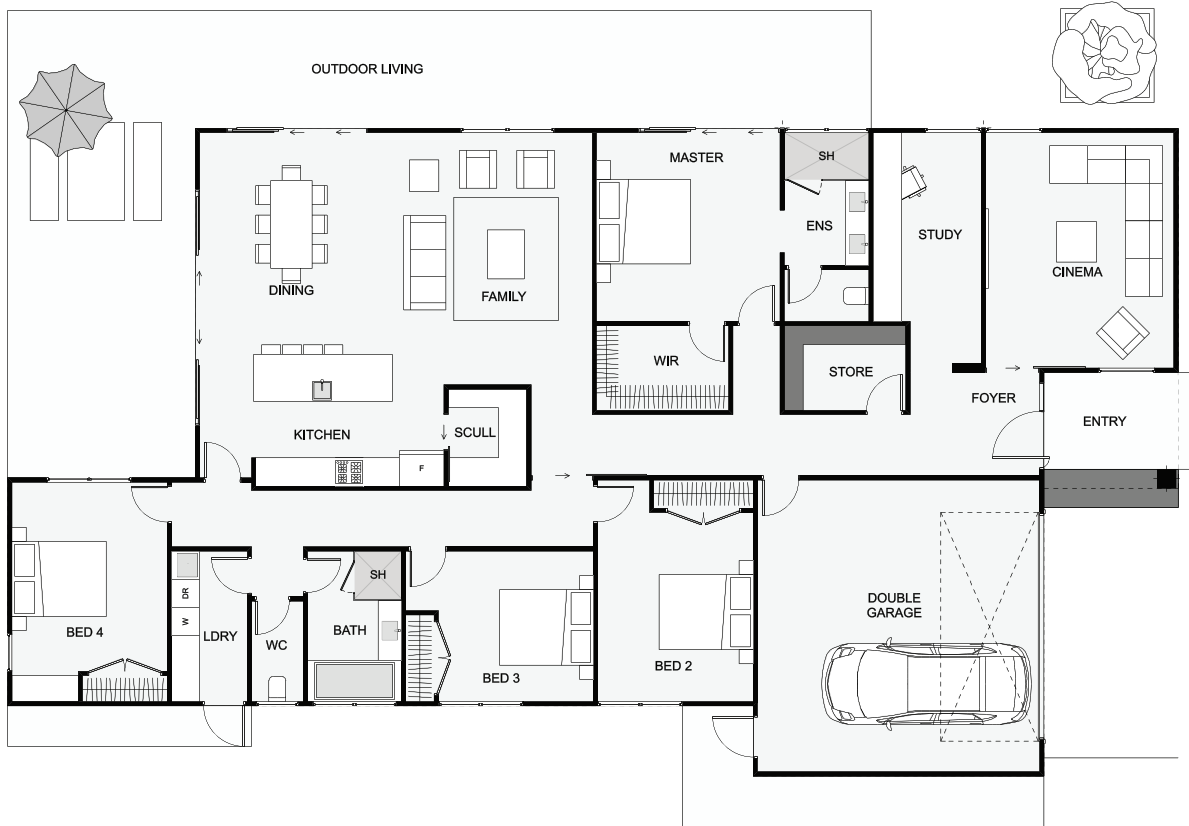


Karamu | NZ Coprosma Shrub



Get some modern street appeal with architectural twin gables and dark weatherboard cladding. This home has two living spaces, each at opposite ends of the house, always handy! Also included is a large study, close to the entry, so great if you work from home. And there's a large laundry, scullery and a living space which flows out to the outdoor living. This home really does work as good as it looks! (Also available in lighter colours).



Floor Area: 265m²

Min Section Size Needed: 665m²

 2
  4+
  2
  2
  24.9m
  13.8m

Contact Us:

Ann: 021 030 4291 | Carl: 027 222 3922

E: ClientEnquiries@Smartway.Builders

www.Smartway.Builders

FH1-05