



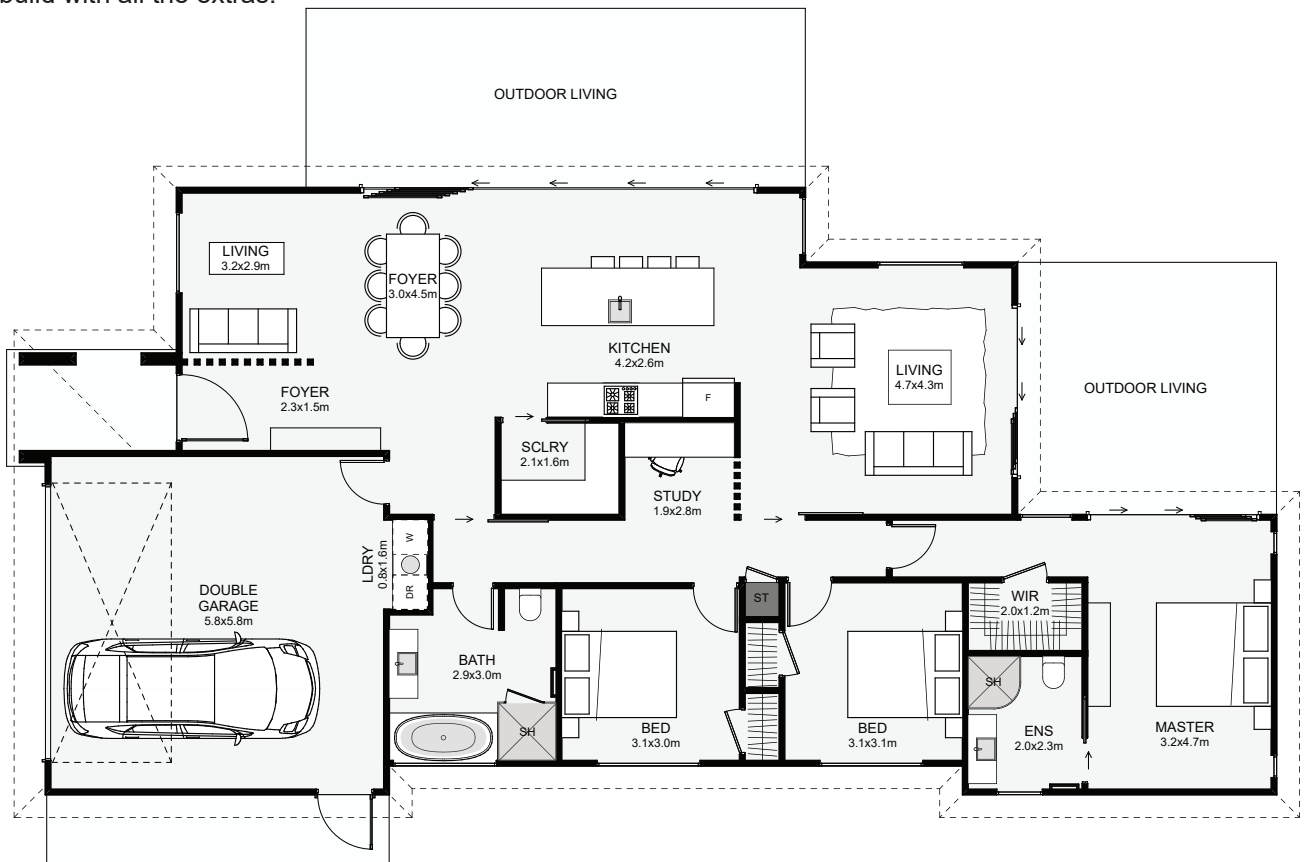
**SMARTWAY BUILDERS**

Expertise On Every Level

## Kawakawa | NZ Pepper Tree



Timeless street appeal in classic weatherboard, this three bedroom home packs a lot of features! Ever wanted a nice entry? You got it! Scullery? Tick! Dual living? No problem! Study? Sure! With this home, you can be sure you're getting a nice build with all the extras!



Floor Area: 180m<sup>2</sup>

Min Section Size Needed: 450m<sup>2</sup>

2 3 2 2 21.9m 10.6m

Contact Us:

Ann: 021 030 4291 | Carl: 027 222 3922

E: ClientEnquiries@Smartway.Builders

[www.Smartway.Builders](http://www.Smartway.Builders)

SDH-02



**SMARTWAY BUILDERS**

Expertise On Every Level